

Aquece Rio - International Sailing Regatta 2014
2 - 9 August 2014

SAILING INSTRUCTIONS

*[DP] denotes a rule for which the penalty is at the discretion of the International Jury.
[NP] denotes that a breach of this rule will not be grounds for a protest by a boat.
[SP] denotes a rule for which a standard penalty may be applied by the Race Committee without a hearing"*

1 RULES

- 1.1 The regatta will be governed by the rules as defined in *the 2013-2016 Racing Rules of Sailing* (RRS).
- 1.2 Decisions of the International Jury will be final as provided in RRS 70.5.
- 1.3 If there is a conflict between languages the English text will take precedence.
- 1.4 Appendix B, Windsurfing Competition Rules, will apply.
- 1.5 Appendix P, Special Procedures for Rule 42, will apply.
- 1.6 For the Men's Skiff, Women's Skiff and Mixed Two Person Multihull events, RRS 44.1 and RRS P2.1 are changed so that the Two-Turns Penalty is replaced by the One-Turn Penalty.
- 1.7 For medal races, ISAF Addendum Q, *Umpired Fleet Racing*, will apply and takes precedence over any conflicting instructions.

2 [DP] [NP] SAFETY REGULATIONS

- 2.1 The Race Officer may protest a boat for a breach of these safety regulations.
- 2.2 Competitors are advised to wear personal flotation devices at all times while afloat, except briefly while changing or adjusting clothing or personal equipment.
- 2.3 Boats not leaving the harbour for a scheduled race shall promptly notify the Race Office.
- 2.4 [SP] Before leaving to race on each scheduled racing day, each crew shall personally sign out on the required race committee form located in a tent beside the launching ramps in the Marina da Gloria and at the Flamengo Beach. From the 28th July until the 09th August boats can only sail outside the Marina da Gloria for training or racing after 1100 and until 1715.

OFFICIAL
SPONSOR



OFFICIAL
SUPPORTER



ORGANISING
AUTHORITY



2.5 [SP] Within the protest time limit after returning ashore, each crew shall personally sign in on the required form, located at the same place as indicated in S.I 2.4.

2.6 A boat that retires from racing shall notify the Race Committee before leaving the racing area, or if that is not possible, shall notify the race office as soon as possible after returning ashore.

2.7 Boats retiring from racing in accordance with SI 2.6 shall complete a retirement declaration form at the race office before the protest time limit.

2.8 In accordance with NoR 15, Berthing, boats shall return to and remain in their assigned berths.

2.9 Boats shall not sail outside their assigned race areas after arriving there, unless they sail directly back to the Venue Marina da Gloria. Boats shall avoid ferry boats on their lines showed in Addendum A. Boats not racing shall remain clear of boats that are racing and official boats.

2.10 Additional Safety Information:

Each Race Area will have boats for security with a Flag with the name Rescue, which should be contacted.

3 [DP] CODE OF CONDUCT

3.1 Competitors shall comply with any reasonable request from a regatta official.

4 COMMUNICATIONS WITH COMPETITORS

4.1 Notices to competitors will be posted on the official notice board(s) located at the upper part of the main building.

4.2 Notices will also be posted on the www.aquecerio.com . Failure to post a notice on the site will not be grounds for redress. This changes RRS 62.

4.3 When a visual signal is displayed over an area or event, the signal applies only to that area or event. This changes the Race Signals preamble.

4.4 Signals ashore will be displayed beside the launching ramps for Finn, 49er, 49er FX, Laser, Laser Radial and 470 (M/W) and at Flamengo Beach for RS:X (M/W) and Nacra.

4.5 When flag AP is displayed ashore, '1 minute' is replaced with 'not less than 30 minutes' for the Race Area Pão de Açúcar, 'not less than 60 minutes' for Race Areas Ponte and Escola Naval and 'not less than 75 minutes' for Race Areas Copacabana and Niterói in the race signal AP.

4.6 When flag Y is displayed ashore, RRS 40 applies at all times while afloat. This changes the Part 4 preamble.

4.7 A Boat shall not leave the shore until flag D is displayed ashore. The warning signal will be made not less than 30 minutes for the Race Area Pão de Açúcar, not less than 60 minutes for Race Areas Ponte and Escola Naval and not less than 75 minutes for Race Areas Copacabana and Niterói after flag D is displayed or not before the schedule time, whichever is later.

5 CHANGES TO SAILING INSTRUCTIONS

5.1 Any change to the format or schedule of races will be posted by 2100 on the day before it will take effect and any change to the sailing instructions will be posted before 0900 on the day it will take effect.

5.2 Any reassignment of events to course areas will be posted before 0900 on the day it will take effect, or if flag AP is displayed ashore, 30 minutes before flag AP for that class is removed.

5.3 When any SI addendum is changed, an updated version of it will be posted on the Official Notice Board as part of these sailing instructions.

5.4 Any change to the sailing instructions will be approved by the Principal Race Officer and the ISAF Technical Delegate.

6 FORMAT OF RACING

6.1 The format for each Olympic event consists of an opening series and a medal race stage.

6.2 For the opening series of each event, number of races scheduled are as follows:

Event	Number of races
Men's One Person Dinghy Women's One Person Dinghy Men's One Person Dinghy Heavyweight Men's Two Person Dinghy Women's Two Person Dinghy	10
Men's Windsurfer Women's Windsurfer Men's Skiff Women's Skiff Mixed Multihull	12

6.3 Medal Race Stage:

6.3.1 A medal stage will be scheduled for each Olympic event with 6 or more opening series races completed. For the Men's and Women's Skiff the medal stage will be 3 races, for all other events it will be one race.

6.3.2 The ten boats ranked highest in the opening series will be assigned to compete in the medal race stage.

6.3.3 Assignments to a medal race stage will be based on the ranking available at 0800 on the day of the medal race stage. The Jury may extend the time limit.

6.4 The, number of races, races per day, and the types of races are shown in SI Addendum C.

7 SCHEDULE OF RACES

7.1 The total number of races scheduled is shown in SI Addendum C.

7.2 The daily race schedule and the scheduled time of the warning signal for the first race are shown in SI Addendum C.

7.3 Races not sailed on the scheduled day may be sailed on a following day at the discretion of the Race Committee.

7.4 The opening series and the medal race stage, will take place as detailed in SI Addendum C.

7.5 The warning signal for each succeeding race will be made as soon as practicable.

7.6 To alert boats that a race or sequence of races will begin soon, the orange starting line flag will be displayed with one sound at least five minutes before a warning signal is made.

7.7 On the last scheduled day of racing for each event, no warning signal will be made after 1615.

8 & 9 SPARE

10 COURSE AREAS

10.1 The course areas are shown in SI Addendum A.

10.2 Events are assigned to course areas as stated in SI Addendum C.

10.3 For the medal race stage, one race course area will be used. The location will be posted on the official notice board in accordance with SI 5.1.

11 THE COURSES

The diagrams in SI Addendum B show the courses, the course designations, the approximate angles between legs, the order in which marks are to be passed, and the side on which each mark is to be left.

12 MARKS

12.1 Marks 1, 2, 3, and 4, or associated gate marks, will be as follows

<u>Course Area</u>	<u>Marks 1, 2, 3, 4</u>	<u>New Mark</u>	<u>Inflatable Starting Line Mark</u>	<u>Inflatable Finishing Line Mark</u>
Pão de Açúcar	Green cylindrical	Green with black strip cylindrical	Green cylindrical	Green cylindrical
Escola Naval	Yellow cylindrical	Yellow with black strip cylindrical	Yellow cylindrical	Yellow cylindrical
Bridge Ponte	Orange cylindrical	Orange with black strip cylindrical	Orange cylindrical	Orange cylindrical
Niterói	Blue cylindrical	Blue with black strip cylindrical	Blue cylindrical	Blue cylindrical
Copacabana	Red cylindrical	Red with black strip cylindrical	Red cylindrical	Red cylindrical

12.2 Offset marks will be the same as Mark 1, 2, 3, 4.

12.3 Marks S1, S2, and S3, or associated gates, will be same as Mark 1, 2, 3, 4.

12.4 The starting and finishing line marks will be Race Officer vessels or inflatable marks.

13 CLASS FLAGS

Class flags will be class insignia on the following background:

<u>Event</u>	<u>Class Insignia</u>	<u>Background Colour</u>
Men's Windsurfer	RS:X	White
Women's Windsurfer	RS:X	Light Blue
Men's One Person Dinghy	Laser Standard	White
Women's One Person Dinghy	Laser Radial	Light Blue
Men's One Person Dinghy Heavy	Finn	White
Men's Two Person Dinghy	470	White
Women's Two Person Dinghy	470	Light Blue

Men's Skiff	49er	White
Women's Skiff	49er FX	Light Blue
Men's Two Person Dinghy	470	White
Women's Two Person Dinghy	470	Light Blue
Mixed Two-Person Multihull	Nacra	White

14 THE START

14.1 The starting line will be between a staff displaying an orange flag on the Race Committee vessel at the starboard end and:

- (a) the course side of the port-end inflatable starting mark, or
- (b) a staff displaying an orange flag on the Race Officer vessel at the port end.

14.2 [DP] A buoy may be attached to the Race Committee starting boat anchor line just below keel depth. Boats shall not pass between this buoy and the Race Committee starting boat at any time. This buoy is part of the Race Committee starting boat ground tackle.

14.3 [DP] When a starting sequence is in progress, boats whose warning signal has not been made shall avoid the starting area. The starting area is defined as a rectangle 50 meters from the starting line and marks in all directions.

14.4 If flag U has been displayed as the preparatory signal, no part of a boat's hull, crew or equipment shall be in the triangle formed by the ends of the starting line and the first mark during the last minute before her starting signal. If a boat breaks this rule and is identified, she shall be disqualified without a hearing but not if the race is restarted or resailed or postponed or abandoned before the starting signal. This changes RRS 26 *Starting Races* and RRS 63.1. When flag U is used as the preparatory signal RRS 29.1 *Individual recall* does not apply. The scoring abbreviation for a flag U penalty is UFD. This changes RRS A11 *Scoring Abbreviations*

15 COURSE CHANGES

15.1 To change the next leg of the course, the Race Committee will (a) lay a new mark, (b) move the finishing line, or (c) move the leeward gate. When a new mark is laid, the original mark will be removed as soon as possible. When in a subsequent change a new mark is replaced, it will be replaced by an original mark.

15.2 Courses will not be shortened. This changes RRS 32.

16 THE FINISH

The finishing line will be between a staff displaying an orange flag on the Race Officer vessel and either:

- (a) the course side of the nearby inflatable finishing mark, or
- (b) a staff displaying an orange flag on the nearby Race Officer vessel.

17 TIME LIMITS AND TARGET TIMES

17.1 For opening series, time limits and target times are as follows:

Class	Time Limit	Mark 1 Time Limit	Finish Window	Target Time
-------	------------	-------------------	---------------	-------------

470, Laser, Laser Radial, Finn	75	25	15	50
Nacra, 49er, 49er FX	50	20	10	30
RS:X	45	20	10	20-25

17.2 For medal race series, time limits and target times are as follows:

Class	Time Limit	Mark 1 Time Limit	Finish Window	Target Time
49er, 49er FX,	20	None	5	10
RS:X M, RS:X W, Nacra	40	10	10	20
All other classes	45	15	10	25

17.3 If no boat has passed Mark 1 within the Mark 1 Time Limit the race will be abandoned.

17.4 Boats failing to finish within the time stated in the Finish Window after the first boat sails the course and finishes will be scored Did Not Finish. This changes RRS 35, A4 and A5.

18 & 19 SPARE

20 [DP] EQUIPMENT AND MEASUREMENT CHECKS

Equipment inspections and equipment substitution will be conducted in accordance with the "Aquece Rio - International Sailing Regatta 2014 Equipment Regulations".

21 [DP] REPLACEMENT OF CREW

For the One Person boats crew substitution is not permitted. For Two Person boats crew substitution is not permitted except in case of proven accident or illness.

22 OFFICIAL BOATS

22.1 Official boats will be marked as follows:

Equipment Inspection - Black **MEASURER** on a Yellow Background

First aid/Medical/Safety - Red **RESCUE** on a White Background

Jury/Judges - Black **JURY** on a White Background

Media - White **MEDIA** on a Green Background

Organisers/VIP - Purple **VIP** on a White Background

Race Committee - **ORANGE** Flag

Rescue or Course Marshals - Red **MARSHALL** on White Background

22.2 Actions by official boats or helicopters shall not be grounds for requesting redress by a boat. This changes RRS 60.1(b).

23 [DP] SUPPORT AND SPECTATOR BOATS

23.1 -The Aquece Rio - International Sailing Regatta 2014 Coach Boat Regulations shall apply to all support boats.

23.2 The Aquece Rio - International Sailing Regatta 2014 Coach Boat Regulations Parts 4 and 5 shall also apply to spectator boats.

24 [DP] [NP] IDENTIFICATION AND ADVERTISING WHILE RACING

24.1 Each day, the first, second and third boats in series ranking at the beginning of the day shall display a yellow, blue and red bib on the crew respectively. In addition, the organizing authority may require a coloured dot to be applied to the mainsail. The organizing authority will supply the bibs and coloured dots, and instructions for their use.

24.2 Boats in specified fleets may display bow numbers. The organizing authority will supply the numbers and instructions for their use.

24.3 Boats shall display required event sponsor advertising. The organizing authority will supply the advertising and instructions for their use.

25 SCORING

25.1 The Low Point System shall apply to all races. For all events except for the Men's Skiff and the Women's Skiff RRS A4.1 is changed so that the points scored in medal races are doubled.

25.2 When fewer than three opening series races have been completed, a boat's series score will be the total of her race scores. When three or more opening series races have been completed, a boat's series score will be the total of her race scores excluding her worst score. However, the score from any medal race will not be excluded.

25.3 A boat starting later than 4 minutes after her starting signal will be scored Did Not Start. This changes RRS A4 and A5.

25.4 RRS A4.2 is changed so that those scores are based on

- (a) The number of boats assigned to compete in a single fleet series, or
- (b) The number of boats assigned to the fleet in the medal stage.

25.5 One race is required to be completed to constitute a regatta.

25.6 The boats competing in the medal race shall be scored highest in the regatta. This may not apply to a boat disqualified under RRS 5 or 69.

25.7 RRS B8 is deleted. RRS A8 is changed as follows:

25.7.1 For boats competing in the medal stage, ties in the regatta score are broken by applying RRS A8.2 to the medal stage score(s). If a tie remains, ties in the regatta score are broken by applying RRS A8.2 to the opening series scores.

25.7.2 Ties in a single fleet opening series shall be broken in accordance with RRS A8.

25.8 A boat assigned to compete in the medal stage shall make a genuine effort to start, sail the course and finish. The penalty for a breach of this instruction will be ranking the boat tenth in the regatta. If there are two such boats, they will be ranked ninth and tenth, in order of their opening-series ranks, and so on. This changes RRS A2.

25.9 To request correction of an alleged error in posted race or series results, a boat may complete a scoring enquiry form available at the race office.

26 PROTESTS, PENALTIES AND REQUESTS FOR REDRESS

26.1 Protest forms are available at the race office, located at the upper part of the main building. Protests and requests for redress or reopening shall be delivered there within the appropriate time limit.

26.2 For each event, the protest time limit is 90 minutes after the last boat has finished the last race of the day.

26.3 Notices will be posted within 30 minutes of the protest time limit to inform competitors of hearings in which they are parties or named as witnesses. Hearings will be held in the protest room, located at the upper part of the main building, beginning at the time posted. Hearings may be scheduled to begin up to 30 minutes before the end of protest time.

26.4 Notices of protests by the Race Committee or International Jury will be posted to inform boats under RRS 61.1(b).

26.5 A list of boats that have been penalized under Appendix P for breaking RRS 42 and under SI 26.8 will be posted.

26.6 Penalties for breaches of NoR 2.4 (National Flags), NoR 15 (Berthing), the Equipment Regulations, class rules, or rules in the NoR and SIs marked [DP], are at the discretion of the International Jury. A boat may accept a discretionary penalty before a hearing concerning the same incident by completing a form available at the jury office.

26.7 Breaches of rules in the SIs marked [NP] will not be grounds for a protest by a boat. This changes RRS 60.1(a).

26.8 For breaches of NoR 2.4 (national Flags) and the SIs marked [SP], the Race Committee may apply a standard penalty without a hearing. A list of these breaches and the associated standard penalties will be posted on the Official Notice Board. However, the Race Committee may protest a boat when they consider the standard penalty to be inappropriate. This changes RRS 63.1 and RRS A5.

26.9 On the last day of the opening series, or on the last scheduled day of racing, a request for reopening a hearing shall be delivered:

(a) Within the protest time limit if the requesting party was informed of the decision on the previous day;

(b) No later than 30 minutes after the requesting party was informed of the decision on that day;

This changes RRS 66.

26.10 On the last day of the opening series, or on the last scheduled day of racing, a request for redress based on a jury decision shall be delivered no later than 30 minutes after the decision was posted. This changes RRS 62.2.

27 [DP] RADIO COMMUNICATIONS

A boat shall neither make radio transmissions while racing nor receive radio communications not available to all boats, except in an emergency or when using equipment provided by the Race Committee. This restriction also applies to mobile telephones.

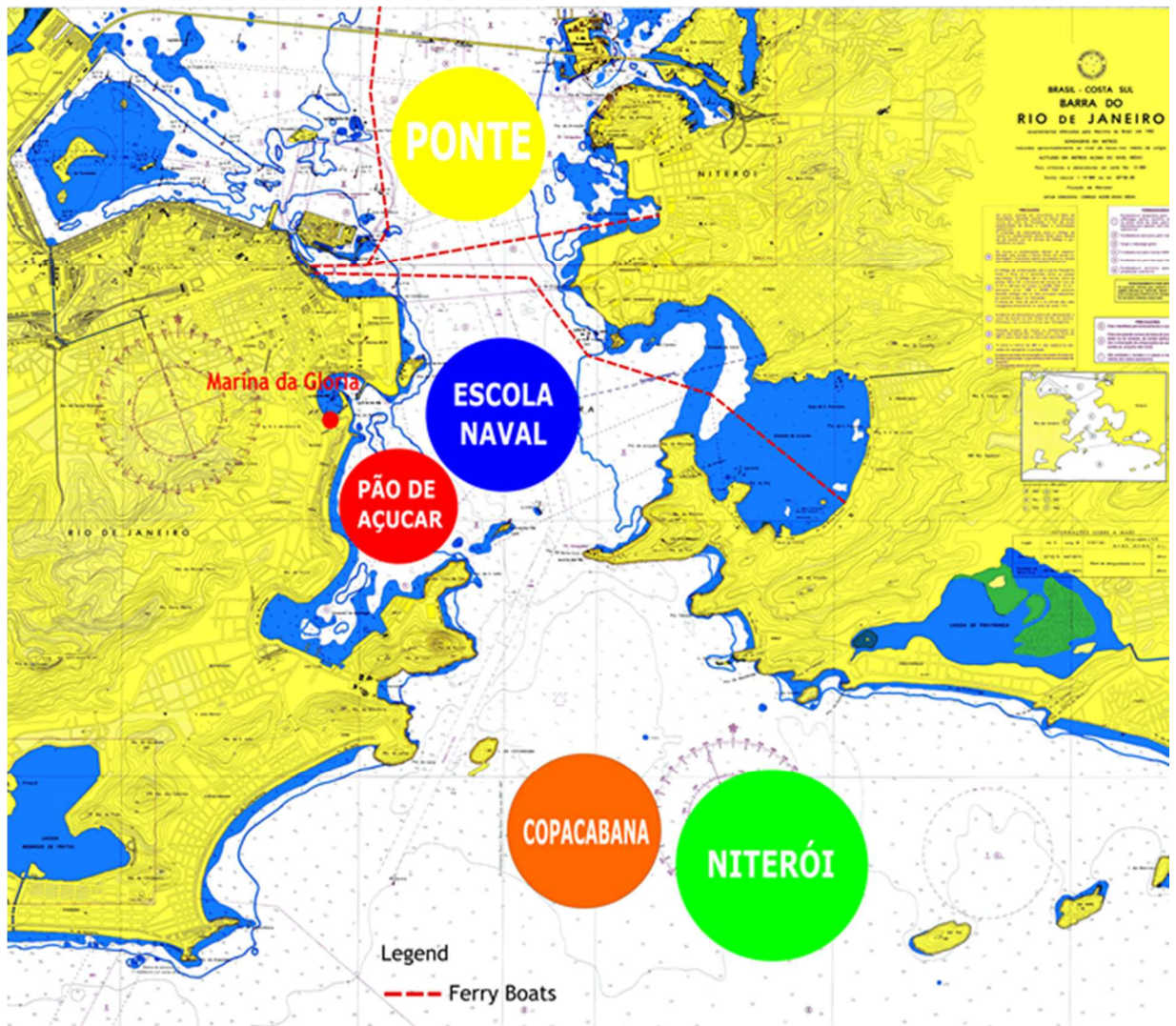
28 [DP] TRASH DISPOSAL

As sailors, we seek to protect and restore our oceans and coastal waters. See RRS 55. Boats shall not intentionally put trash in the water. Trash may be placed aboard support and Race Officer boats.

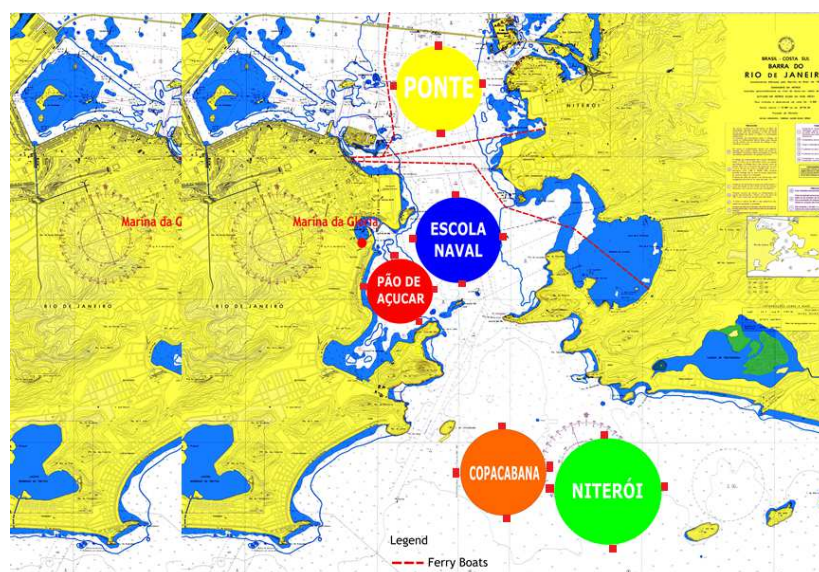
29 PRIZES

29.1 Medals will be awarded to the top 3 boats in each event. The Organising Authority may alter prizes if less than 10 boats are entered in an event.

ADDENDUM A - COURSE AREAS



Race Areas with Marks asked from Navy.



ADDENDUM B - COURSE ILLUSTRATIONS

L

Course: Windward/Leeward	
Signal	Mark Rounding Order
L2	Start - 1 - 2a/2p - 1 - Finish
L3	Start - 1 - 2a/2p - 1 - 2a/2p - 1 - Finish
L4	Start - 1 - 2a/2p - 1 - 2a/2p - 1 - 2a/2p - 1 - Finish

LS

Course: Windward/Leeward With Stalem Finish

Signal	Mark Rounding Order
LS2	Start - 1 - 2a/2p - 1 - 2p - S1 - S2 - S3 - Finish
LS3	Start - 1 - 2a/2p - 1 - 2a/2p - 1 - 2p - S1 - S2 - S3 - Finish
LS4	Start - 1 - 2a/2p - 1 - 2a/2p - 1 - 2a/2p - 1 - 2p - S1 - S2 - S3 - Finish

I

Course: Inner Trapezoid

Signal	Mark Rounding Order
I2	Start - 1 - 4a/4p - 1 - 2 - 3p - Finish
I3	Start - 1 - 4a/4p - 1 - 4a/4p - 1 - 2 - 3p - Finish
I4	Start - 1 - 4a/4p - 1 - 4a/4p - 1 - 4a/4p - 1 - 2 - 3p - Finish

O

Course: Outer Trapezoid

Signal	Mark Rounding Order
O2	Start - 1 - 2 - 3a/3p - 2 - 3p - Finish
O3	Start - 1 - 2 - 3a/3p - 2 - 3a/3p - 2 - 3p - Finish
O4	Start - 1 - 2 - 3a/3p - 2 - 3a/3p - 2 - 3a/3p - 2 - 3p - Finish

LG

Course: Windward/Leeward	
Signal	Mark Rounding Order
LG2	Start - 1 - 4a/4p - 1 - 4a - Finish
LG3	Start - 1 - 4a/4p - 1 - 4a/4p - 1 - 4a - Finish
LG4	Start - 1 - 4a/4p - 1 - 4a/4p - 1 - 4a/4p - 1 - 4a - Finish

LR

Course: Windward/Leeward	
Signal	Mark Rounding Order
LR2	Start - 1 - 4a/4p - 1 - 4p - Finish
LR3	Start - 1 - 4a/4p - 1 - 4a/4p - 1 - 4p - Finish
LR4	Start - 1 - 4a/4p - 1 - 4a/4p - 1 - 4a/4p - 1 - 4p - Finish

IA

Course: Same As Course I Except With Offset Mark 1A	
Signal	Mark Rounding Order
IA2	Start - 1 - 1a - 4a/4p - 1 - 1a - 2 - 3p - Finish
IA3	Start - 1 - 1a - 4a/4p - 1 - 1a - 4a/4p - 1 - 1a - 2 - 3p - Finish
IA4	Start - 1 - 1a - 4a/4p - 1 - 1a - 4a/4p - 1 - 1a - 4a/4p - 1 - 1a - 2 - 3p - Finish

LA

Course: Same As Course I Except With Offset Mark 1A	
Signal	Mark Rounding Order
LA2	Start - 1 - 1a - 2a/2p - 1 - 1a - Finish
LA3	Start - 1 - 1a - 2a/2p - 1 - 1a - 2a/2p - 1 - 1a - Finish
LA4	Start - 1 - 1a - 2a/2p - 1 - 1a - 2a/2p - 1 - 1a - 2a/2p - 1 - 1a - Finish

IS

Course: Inner Stalem

Signal	Mark Rounding Order
IS2	Start - 1 - 4a/4p - 1 - 2 - 3p - S1 - S2 - S3 - Finish
IS3	Start - 1 - 4a/4p - 1 - 4a/4p - 1 - 4a/4p - 1 - 2 - 3p - S1 - S2 - S3 - Finish
IS4	Start - 1 - 4a/4p - 1 - 4a/4p - 1 - 4a/4p - 1 - 4a/4p - 1 - 2 - 3p - S1 - S2 - S3 - Finish

OS

Course: Outer Stalem

Signal	Mark Rounding Order
OS2	Start - 1 - 2 - 3a/3p - 2 - 3p - S1 - S2 - S3 - Finish
OS3	Start - 1 - 2 - 3a/3p - 2 - 3a/3p - 2 - 3p - S1 - S2 - S3 - Finish
OS4	Start - 1 - 2 - 3a/3p - 2 - 3a/3p - 2 - 3a/3p - 2 - 3p - S1 - S2 - S3 - Finish

<p>LGA</p> <p>Course: Same as Course LG except with Offset Mark 1A</p>	<p>LRA</p> <p>Course: Same as Course LR except with offset Mar 1A</p>				
<table border="1"> <tr> <th>Signal</th> <th>Mark Rounding Order</th> </tr> </table>	Signal	Mark Rounding Order	<table border="1"> <tr> <th>Signal</th> <th>Mark Rounding Order</th> </tr> </table>	Signal	Mark Rounding Order
Signal	Mark Rounding Order				
Signal	Mark Rounding Order				
<table border="1"> <tr> <td>LGA2</td> <td>Start-1-1a-4s/4p-1-1a-4s-Finish</td> </tr> </table>	LGA2	Start-1-1a-4s/4p-1-1a-4s-Finish	<table border="1"> <tr> <td>LRA2</td> <td>Start-1-1a-4s/4p-1-1a-4p-Finish</td> </tr> </table>	LRA2	Start-1-1a-4s/4p-1-1a-4p-Finish
LGA2	Start-1-1a-4s/4p-1-1a-4s-Finish				
LRA2	Start-1-1a-4s/4p-1-1a-4p-Finish				
<table border="1"> <tr> <td>LGA3</td> <td>Start-1-1a-4s/4p-1-1a-4s/4p-1-1a-4s-Finish</td> </tr> </table>	LGA3	Start-1-1a-4s/4p-1-1a-4s/4p-1-1a-4s-Finish	<table border="1"> <tr> <td>LRA3</td> <td>Start-1-1a-4s/4p-1-1a-4s/4p-1-1a-4p-Finish</td> </tr> </table>	LRA3	Start-1-1a-4s/4p-1-1a-4s/4p-1-1a-4p-Finish
LGA3	Start-1-1a-4s/4p-1-1a-4s/4p-1-1a-4s-Finish				
LRA3	Start-1-1a-4s/4p-1-1a-4s/4p-1-1a-4p-Finish				
<table border="1"> <tr> <td>LGA4</td> <td>Start-1-1a-4s/4p-1-1a-4s/4p-1-1a-4s/4p-1-1a-4s-Finish</td> </tr> </table>	LGA4	Start-1-1a-4s/4p-1-1a-4s/4p-1-1a-4s/4p-1-1a-4s-Finish	<table border="1"> <tr> <td>LRA4</td> <td>Start-1-1a-4s/4p-1-1a-4s/4p-1-1a-4s/4p-1-1a-4p-Finish</td> </tr> </table>	LRA4	Start-1-1a-4s/4p-1-1a-4s/4p-1-1a-4s/4p-1-1a-4p-Finish
LGA4	Start-1-1a-4s/4p-1-1a-4s/4p-1-1a-4s/4p-1-1a-4s-Finish				
LRA4	Start-1-1a-4s/4p-1-1a-4s/4p-1-1a-4s/4p-1-1a-4p-Finish				

ADDENDUM C - SCHEDULE OF RACES

EVENT	Fleets	Total Races	Sun 03		Mon 04		Tue 05		Wed 06		Thu 07		Fri 08		Sat 09	
			Area/time	#	time	#	time	#	time	#	time	#	time	#	time	#
Men's Windsurfer	1	13	Pão de Açucar 1300	3	Escola Naval 1310	3	Pão de Açucar 1300	3	Escola Naval 1310	3	Medal TBA 1300	1				
Women's Windsurfer	1	13	Pão de Açucar 1310	3	Escola Naval 1300	3	Pão de Açucar 1310	3	Escola Naval 1300	3	Medal TBA 1300	1				
Men's One Person Dinghy	1	11			Niteroi 1300	2	Copacabana 1310	2	Copacabana 1300	2	Escola Naval 1310	2	Ponte 1300	2	Medal TBA 1300	1
Women's One Person Dinghy	1	11			Niteroi 1310	2	Copacabana 1300	2	Copacabana 1310	2	Escola Naval 1300	2	Ponte 1310	2	Medal TBA 1300	1
Men's One Person Dinghy Heavyweight	1	11	Ponte 1300	2	Ponte 1300	2	Niteroi 1300	2	Ponte 1300	2	Niteroi 1300	2	Medal TBA 1300	1		
Men's Two Person Dinghy	1	11			Copacabana 1300	2	Escola Naval 1310	2	Niteroi 1300	2	Copacabana 1310	2	Escola Naval 1300	2	Medal TBA 1300	1
Women's Two Person Dinghy	1	11			Copacabana 1310	2	Escola Naval 1300	2	Niteroi 1310	2	Copacabana 1300	2	Escola Nava 1310	2	Medal TBA 1300	1
Men's Skiff	1	15			Pão de Açucar 1300	3	Ponte 1530	3	Pão de Açucar 1300	3	Ponte 1530	3	Medal TBA 1300	3		
Women's Skiff	1	15			Pão de Açucar 1310	3	Ponte 1300	3	Pão de Açucar 1310	3	Ponte 1300	3	Medal TBA 1300	3		
Mixed Two Person Multihull	1	13			Ponte 1310	3	Niteroi 1310	3	Ponte 1310	3	Niteroi 1310	3	Medal TBA 1300	1		